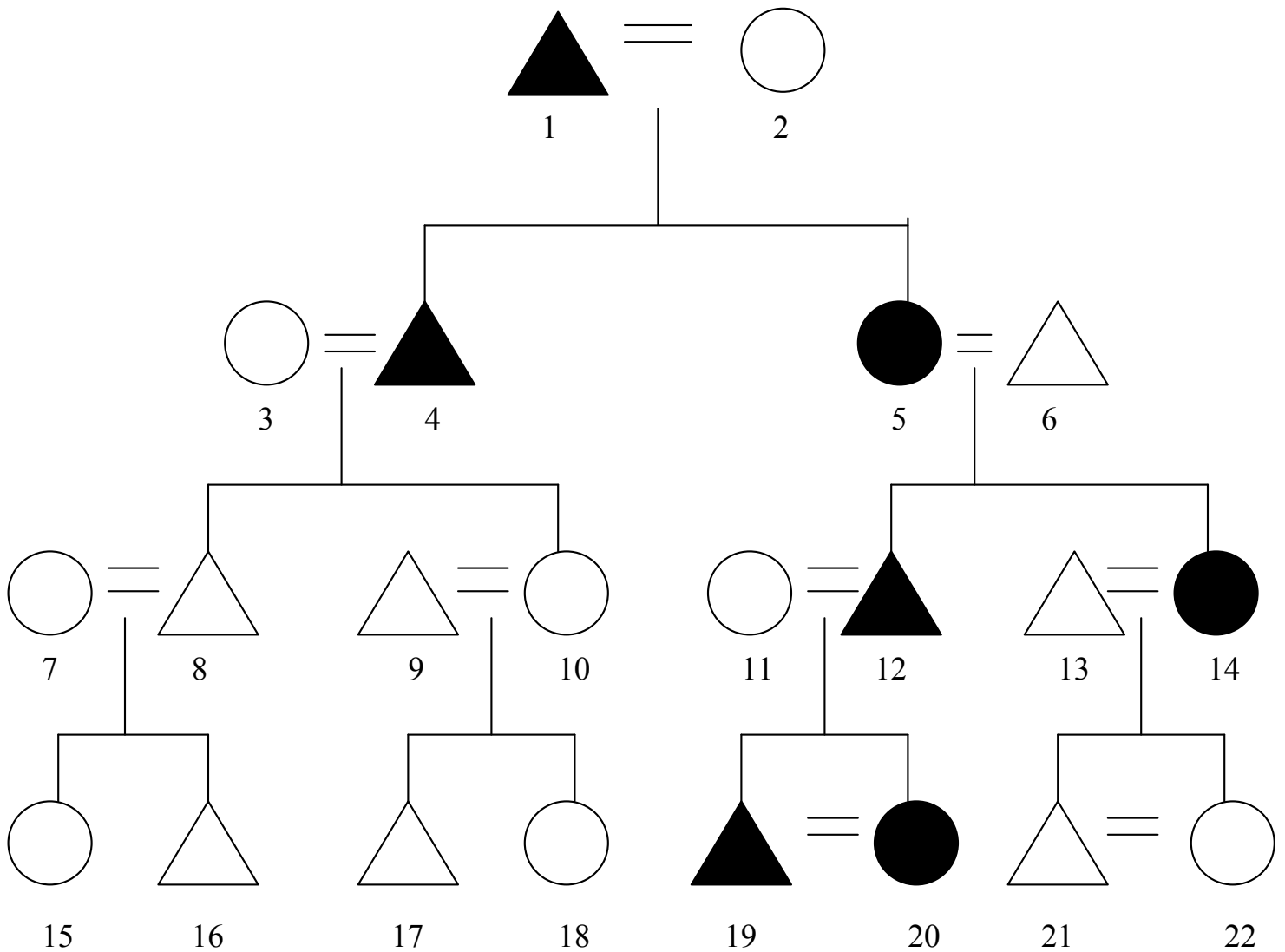


A hypothetical ambilineal group of kin is indicated by the color. Members 4 and 5 belong to this group because of a male link, their father (1); members 12 and 14 belong because of a female link, their mother (5); and members 19 and 20 belong because of a male link, their father (12). This is a hypothetical example because any combination of lineal links is possible in an ambilineal descent group.



AMBILINEAL DESCENT